



High Power Polarization Insensitive Isolator Core (HIC Series)

Spec Review No.: SR2258C Date: Oct 14, 2013

The High Power Polarization Insensitive Isolator Core is characterized with low insertion loss, high isolation, high power handling, high return loss, excellent environmental stability and reliability. It is ideal for fiber amplifier, fiber laser, and instrumentation applications.

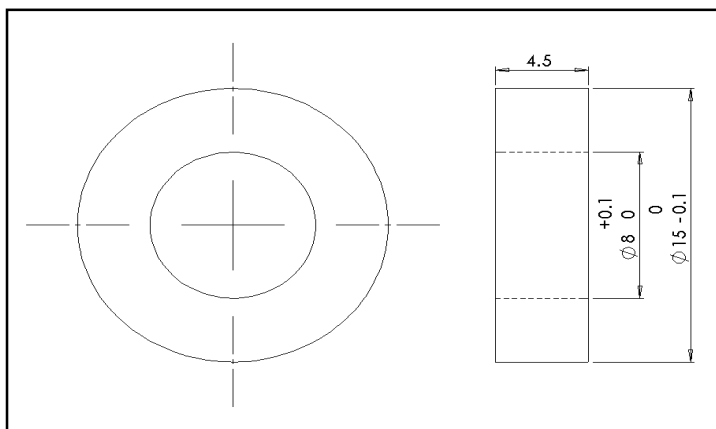
Specifications

Parameter	Unit	Single Stage	Dual Stage
Center Wavelength	nm	1310 or 1550	
Typ. Isolation	dB	40	52
Min. Isolation at 23°C	dB	38	48
Max. Insertion Loss at 23°C	dB	0.2	0.35
Max. PDL at 23°C	dB	0.1	0.1
Max. Beam Deviation Error	Deg	1	1
Max. Optical Power (Continuous Wave)	W	20	
Operating Temperature	°C	-5 to +70	
Storage Temperature	°C	-40 to +85	

Remark:

1. Clear aperture diameter is 4.0 mm.
2. Below dimensions are the available package dimensions, but there may be slight modification when put into production.

Package Dimensions



Ordering Information

HIC-①-②②-③

①: Stage

1 - Single Stage

2 - Dual Stage

②②: Wavelength

31 - 1310 nm

55 - 1550 nm

③: Optical Path Orientation

F - Forward

B - Backward