


**633nm~635nm 30mW~40mW SM Fiber Coupled Laser Diode with 4um SMF**
**633nm 30mW Coaxial Pigtailed LD with Single Mode Fiber (SM Fiber)**

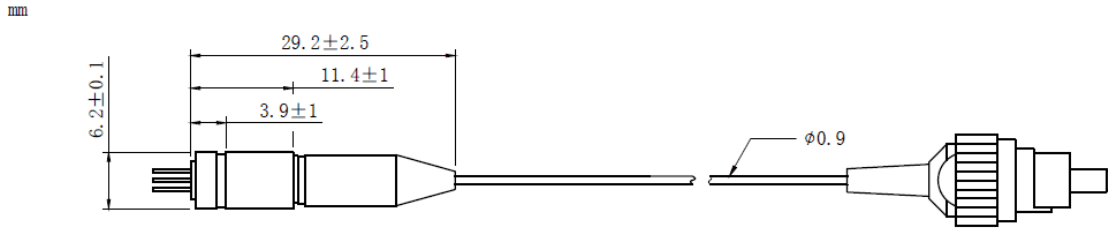
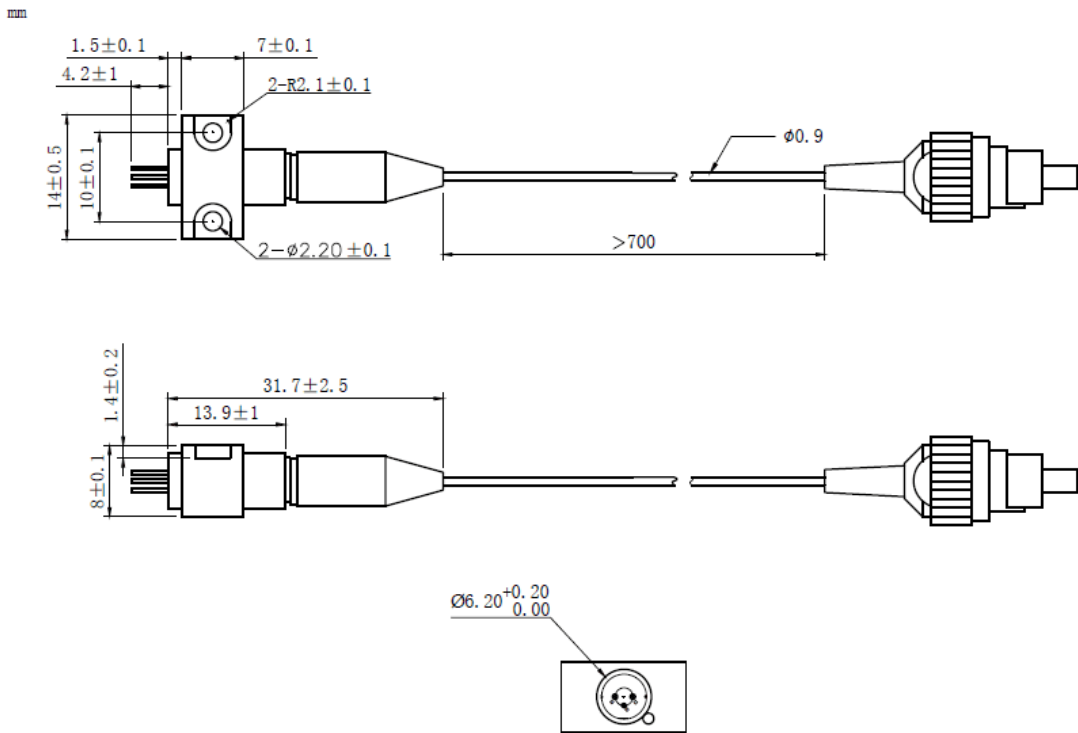
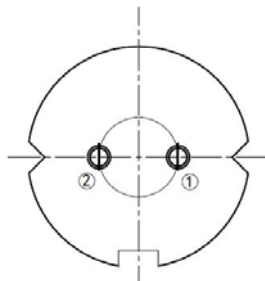
WSLP-633-030m-4

Wavespectrum Laser Group

[www.wavespectrum-laser.com](http://www.wavespectrum-laser.com)
[en.wavespectrum-laser.com.cn](http://en.wavespectrum-laser.com.cn)

633nm Pigtailed Diode Laser		30mW/SM Fiber	
PARAMETER	SYMBOL	VALUE	UNIT
Reverse Voltage	$V_r$	2.0	V
Operating Temperature	$T_{op}$	-10~+20	°C
Storage Temperature	$T_{stg}$	-40~+85	°C
Lead soldering temperature (10 sec.)	$T_{is}$	260	°C
<b>Features:</b> <ul style="list-style-type: none"> <li>• 633nm</li> <li>• SM Fiber</li> <li>• Coaxial or B82 Package</li> </ul>			
<b>Applications:</b> <ul style="list-style-type: none"> <li>• Medical Laser Treatment</li> <li>• Aiming Beam</li> <li>• Others</li> </ul>			
<b>Specifications</b>	<b>WSLP-633-030m-4</b>		
	Min	Type	Max
Center Wavelength@18°C	633nm±5nm		
Recommended work Temperature	≤18°C		
Output Power	----	30mW	----
Fiber Type	Single Mode Fiber		
Fiber Core	4um		
Monitor Current	----	----	----
PD Reverse Voltage	----	----	----
Fiber Connector	FC/SC/SMA905		
Fiber Length	>80cm		
Threshold Current	----	55mA	90mA
Operating Current	----	180mA	200mA
Operating Voltage	----	2.7V	3.3V
Package Style	Coaxial or B82		



**Coaxial Package View: (Part Number: WSLP-633-030m-4)**

**B82 Package View: (Part Number: WSLP-633-030m-4-B)**

**PIN Bottom View:**


1	LD(+)
2	LD(-)



Electrically shorten LD module and store in non-extreme conditions.  
Suggest using the constant current power supply.

