


**633nm~635nm 30mW PM Fiber Coupled Laser Diode with Coaxial Package | Red Laser Diode
 633nm 30mW Coaxial Pigtailed LD with Polarization Maintaining Fiber (SM Fiber)**

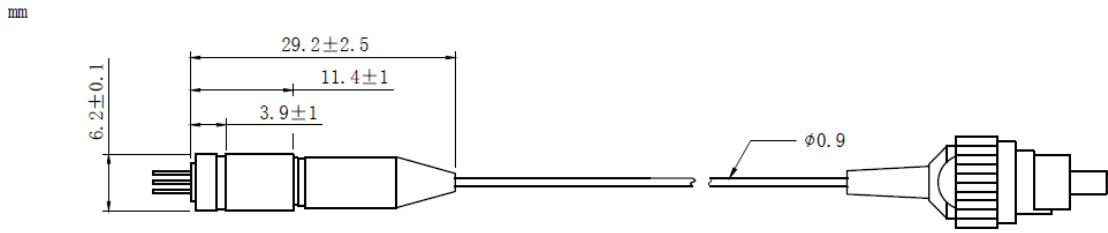
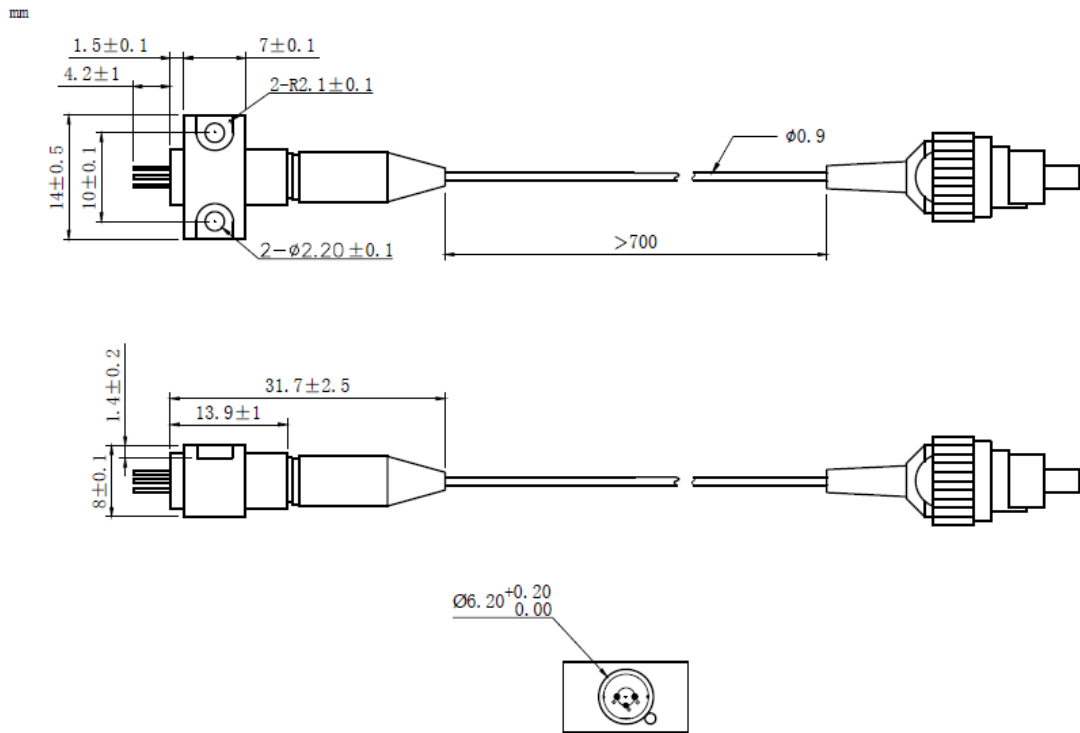
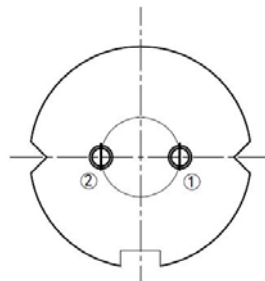
WSLP-633-030m-PM

Wavespectrum Laser Group

www.wavespectrum-laser.com

633nm Pigtailed Diode Laser		30mW/PM Fiber		en.wavespectrum-laser.com.cn	
PARAMETER	SYMBOL	VALUE	UNIT		
Reverse Voltage	V_r	2.0		V	
Operating Temperature	T_{op}	-10~+20		°C	
Storage Temperature	T_{stg}	-40~+85		°C	
Lead soldering temperature (10 sec.)	T_{is}	260		°C	
Features: <ul style="list-style-type: none"> 633nm PM Fiber High Reliability High Polarization Extinction Ratio 					
Applications: <ul style="list-style-type: none"> Biological Instruments Analytical Equipment Others 					
Specifications	WSLP-633-030m-PM				
	Min	Type	Max		
Center Wavelength@18°C		633nm±5nm			
Recommended work Temperature	≤18°C				
Output Power	----	30mW	----		
Fiber Type	Polarization Maintaining Fiber				
Fiber Core	4um				
Polarization Extinction Ratio	13dB	15dB	----		
Monitor Current	----	----	----		
Fiber Connector	FC/APC				
Fiber Length	>80cm				
Threshold Current	----	55mA	90mA		
Operating Current	----	180mA	200mA		
Operating Voltage	----	2.7V	3.3V		
Package Style	Coaxial or B82				
High Polarization Extinction Ratio (PER) Version Laser Module is also available, please contact us.					



Coaxial Package View: (Part Number: WSLP-633-030m-PM)

B82 Package View: (Part Number: WSLP-633-030m-PM-B)

PIN Bottom View:


1	LD(+)
2	LD(-)



Electrically shorten LD module and store in non-extreme conditions.
Suggest using the constant current power supply.

