



High Power Polarization Insensitive Isolator (HI Series)

Spec Review No.: SR21062 Date: Jul. 28, 2020

The Polarization Insensitive Isolator is characterized with low insertion loss, high isolation, high return loss and excellent environmental stability and reliability. It is specially designed for 2um polarization insensitive fiber amplifiers, fiber laser systems.

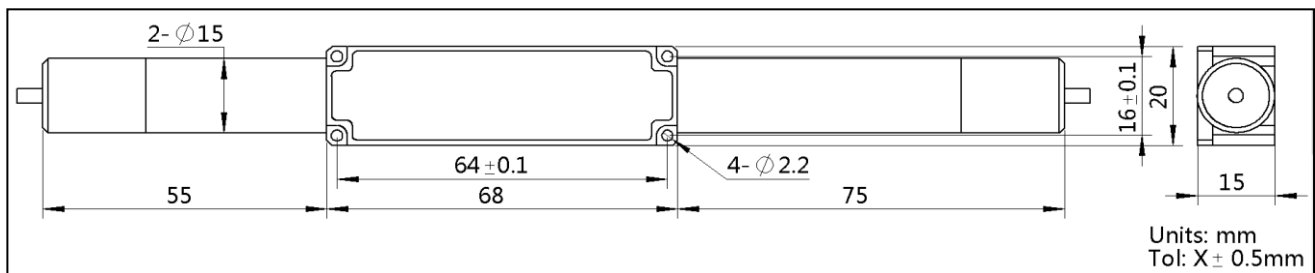
Specifications

Parameter	Unit	Value
Center Wavelength (λ_c)	nm	1910 or 2050
Operating Wavelength Range	nm	$\lambda_c \pm 10$
Max. Polarization Dependent Loss, 23°C	dB	0.2
Min. Isolation, λ_c , 23 °C, all polarization states	dB	25
Max. Insertion Loss, λ_c , 23 °C, all polarization states	dB	1.6
Min. Return Loss (Input/Output)	dB	45/45
Max. Average Optical Power	W	50
Max. Peak Power for ns pulse	kW	10
Max. Tensile Load	N	5
Fiber Type		Specified by ordering info
Operating Temperature	°C	10 to +50
Storage Temperature	°C	0 to +60

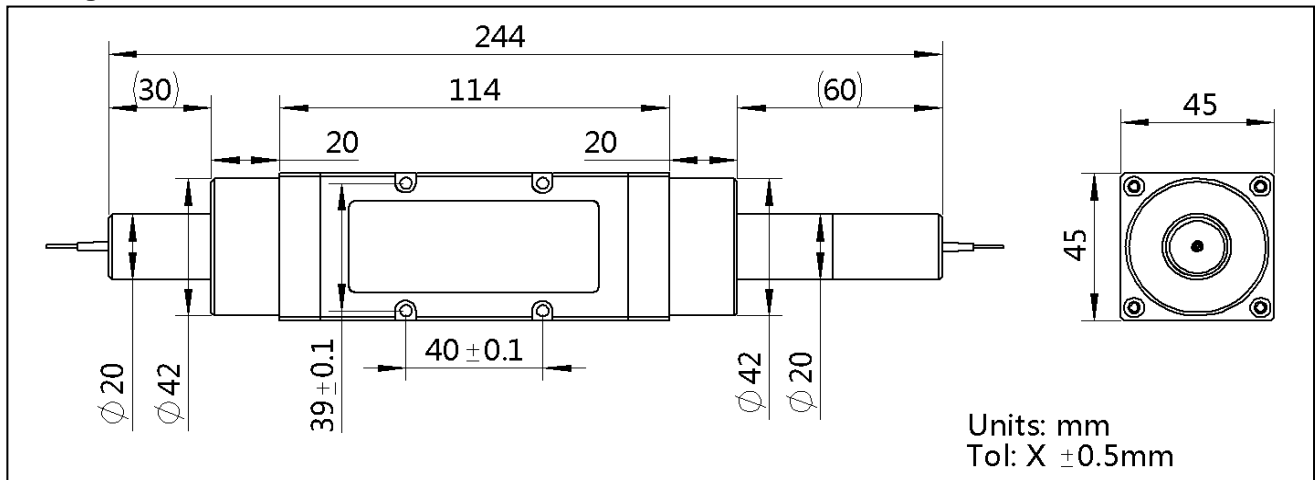
Package Dimensions

Note: Package type depends on client accepts customized lens (package one) or not (package two).

Package one:



Package two:



HI-①①①①-②②-③-④-⑤-⑥

①①①①: Wavelength

1910 - 1910nm

2050 - 2050nm

SSSS - Specify

②②: Handling Power

50 - 50 W

SS - Specify

③: Fiber Type

1 - Nufern LMA-GDF-25/400-09M

2 - Nufern LMA-GDF-25/250-09M

3 - IxBlue IXF-2CF-PAS-20-250-0.08

S - Specify

④: Fiber Jacket

B - bare fiber

⑤: Fiber Length

Q - 0.75 m

1 - 1.0m

S - Specify

⑥: Power Type

P - Pulse Application

C - Continuous Wave



日本デバイス株式会社 E-mail sales@j-device.com

www.j-device.com

Tel 03-6262-3424 Fax 03-6800-5883