

Table: SUN-DS-PC-FOPC005-E

Version: A/0

Fiber Optic Patch Cords

Fiber Optic Patch cords (jumpers) are available in either single mode or multi-mode for various applications such as long-haul telecommunication networks, short-link systems and equipment-to-equipment data links.

Features

Fiber Connector 1: FC, ST, SC, LC, MU, MTRJ, SMA, ESC, MPO or none

Fiber Connector 2: FC, ST, SC, LC, MU, MTRJ, SMA, ESC, MPO or none

Ferrule Interface type: PC, UPC, APC

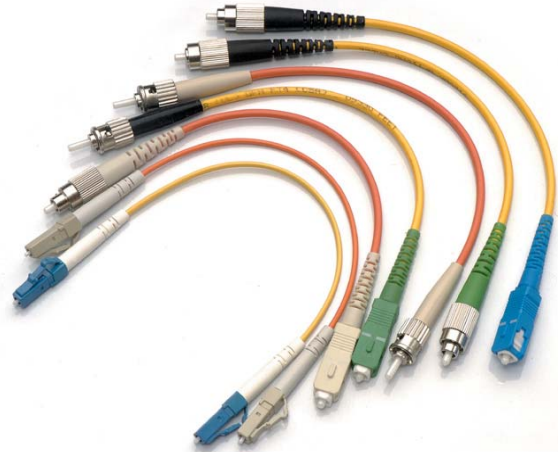
Fiber Diameter (mm): Φ 0.9, Φ 2.0, Φ 3.0

Fiber Cores: Simplex fiber core, duplex fiber core

Fiber Jacket: PVC, LSZH or customize

Fiber Type: Single Mode (G. 652, G. 655, G.656, G.657), Multimode (50/125um) / (62.5/125um), OM3

Cable Length: 1m, 3m, 10m, 30m, or customize



Specification

Parameters	MM	SM	
		UPC	APC
Reflection loss (dB)	≥35	≥50	≥60
Insertion loss (dB)	<0.3	<0.3	<0.3
Insertion loss (dB) under conditions below:			
Bump testing 4000 times	<0.1	<0.2	<0.2
Vibration testing: Amplitude 1.5 mm PP; Frequency 10-50 Hz; 2 min	<0.1	<0.2	<0.2
Temperature-Humidity: T=65°C; H=95%; 160 hours	<0.1	<0.2	<0.2
Tensile strength testing: Loaded /10 kgf	<0.1	<0.2	<0.2
Salt spray testing: Salt=5%; 95 hours	<0.1	<0.2	<0.2
Torsion testing: Loaded=500 gf torsion ; Angle=180 degrees; 10 times/min, 200 times	<0.1	<0.2	<0.2
Fiber banding test: Banding angle 290 degrees; 10 times/min, 200 times	<0.1	<0.2	<0.2
Fiber connector	Compliant with IEC60874 EIA/TIA-568-B, TIA/EIA 604-4) Comply with Bellcore GR-326-CORE specification		
1-Fiber SM cable	Corning or any supplier with same quality and specification		
Storage/Operating Temperature) (°C)	-20 ~ +60		



Order information

SUN-A-B-C-D-E-FG-H¹⁾

A	B	C	D	E	F	G
Connector	Length	Connector	Fiber Type	Single/Du plex	Jacket Diameter	Jacket Material
SC: SC/UPC FC: FC/UPC ST: ST/UPC LC: LC/UPC ASC: SC/APC AFC: FC/APC ALC: LC/AP C	M:	SC: SC/UPC FC: FC/UPC ST: ST/UPC LC: LC/UPC ASC: SC/APC AFC: FC/APC ALC: LC/AP C	SM: G652D SMA1(2): G657A1(2) SM6 : G656 OM1: 62.5/125um OM2: 50/125um OM3-150: 50/125um, 150m OM3-300: 50/125um, 300m OM4: 50/125um, 550m	SX: DX:	3: 3mm 2: 2mm 0.9:0.9mm	P: PVC L: LSZH



日本デバイス株式会社
www.j-device.com

E-mail sales@j-device.com

Tel 03-6262-3424 Fax 03-6800-5883

Note: For the necessity of improvement, the material contained in this document is subject to change without notice.

20150901